

SCHEMATIC DIAGRAM - 10

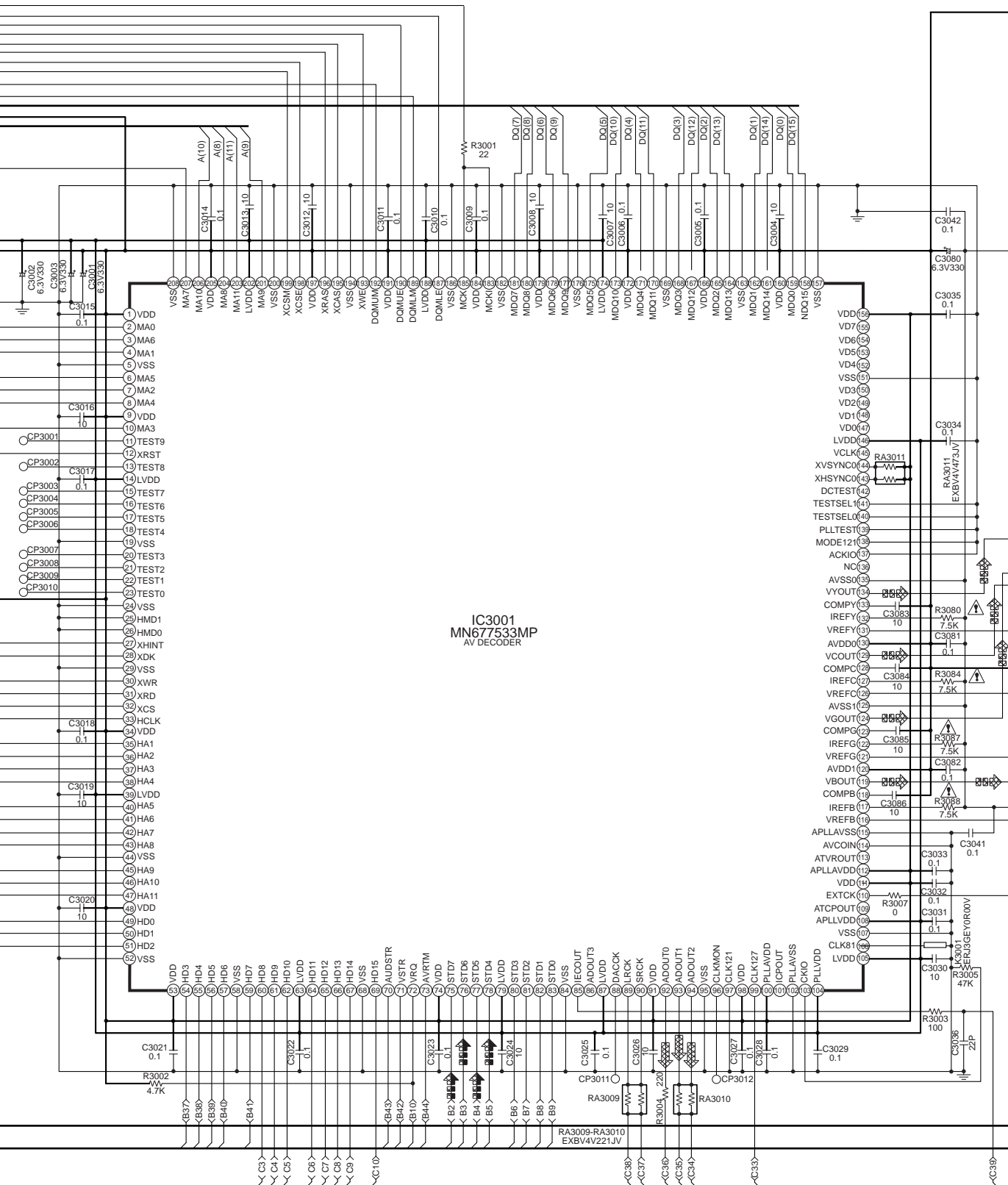
B DVD MODULE(2) CIRCUIT

— : +B SIGNAL LINE

⊠ : CD/DVD (AUDIO) SIGNAL LINE

▣ : DVD (AUDIO/VIDEO) SIGNAL LINE

⊠ : DVD (VIDEO) SIGNAL LINE

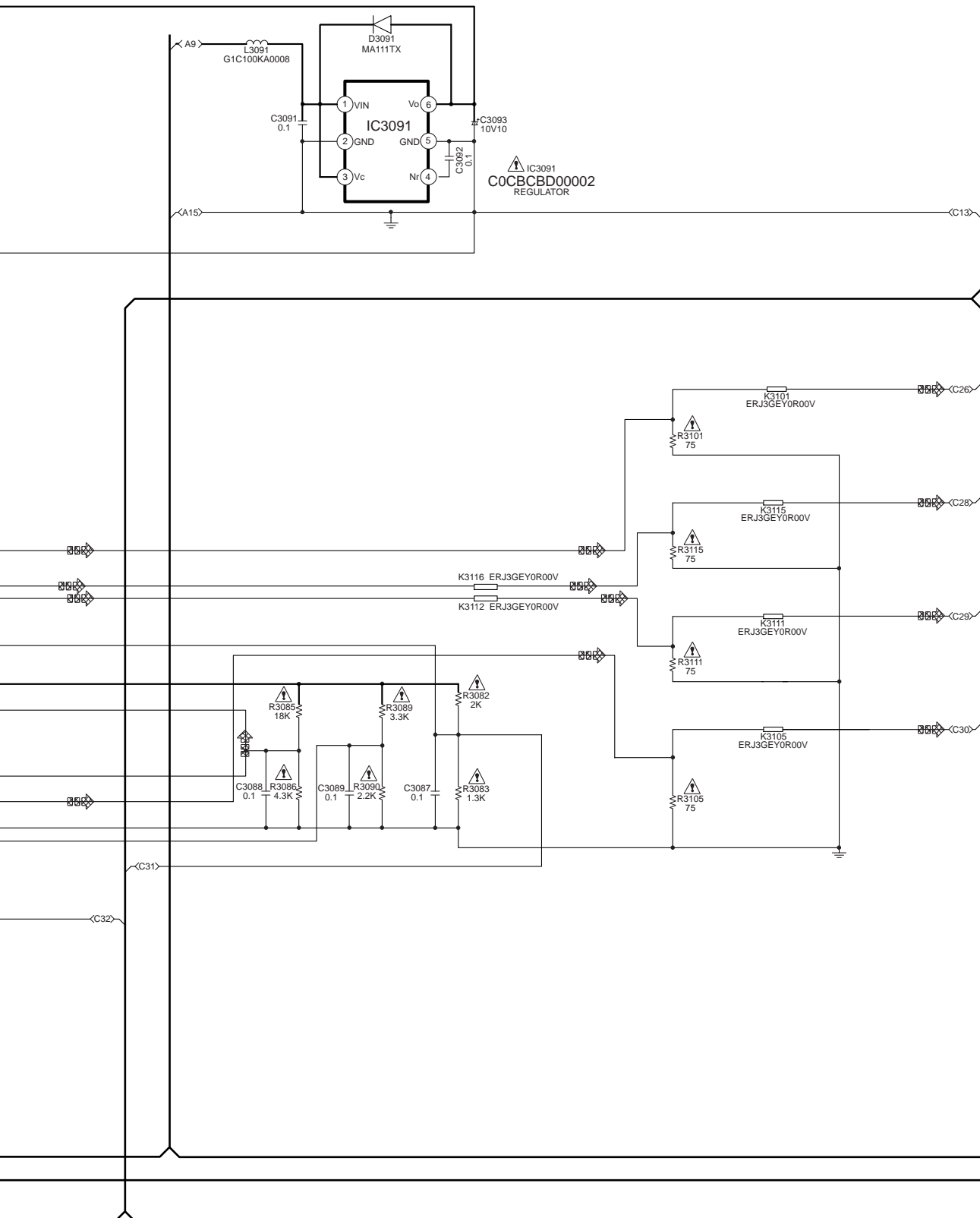


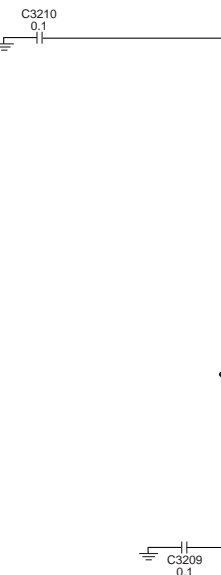
SCHEMATIC DIAGRAM - 11

B DVD MODULE(2) CIRCUIT

— : +B SIGNAL LINE

⊠ : DVD (VIDEO) SIGNAL LINE

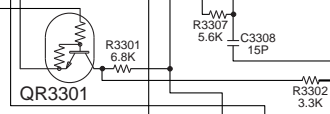
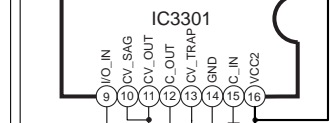




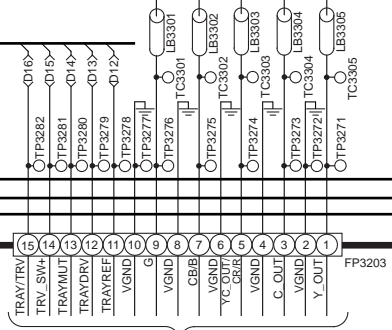
IC3301
C1AB00001393
VIDEO BUFFER

QR3301
UNR5212TX
AMP

C3301
4V/100P. GN
6.3V/100P. GCP/GCS/GC/CK/CT



LB3301-LB3305
VLP0155-T

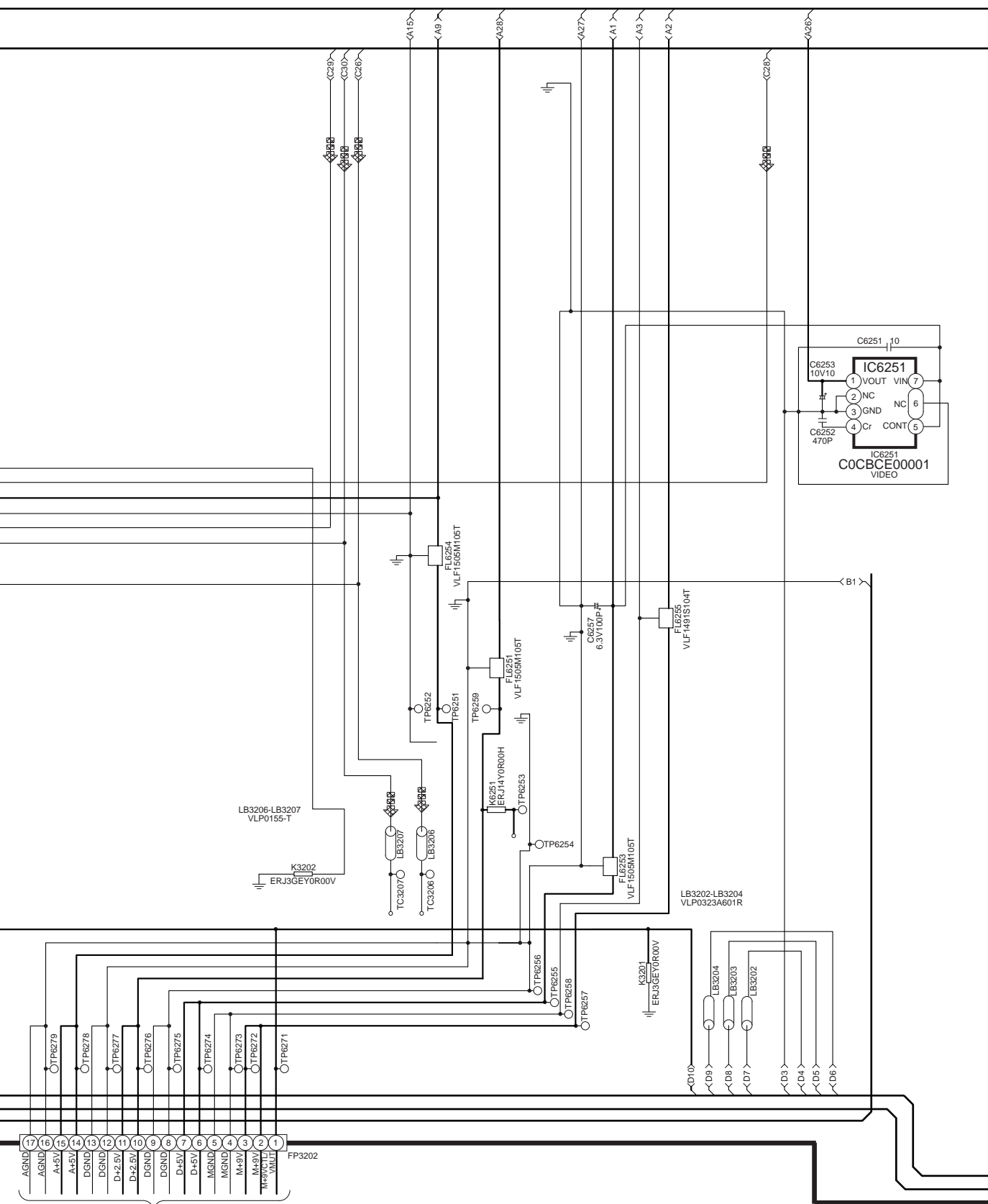


TO INPUT CIRCUIT (CN101) ON SCHEMATIC DIAGRAM-16

B DVD MODULE(2) CIRCUIT

— : +B SIGNAL LINE

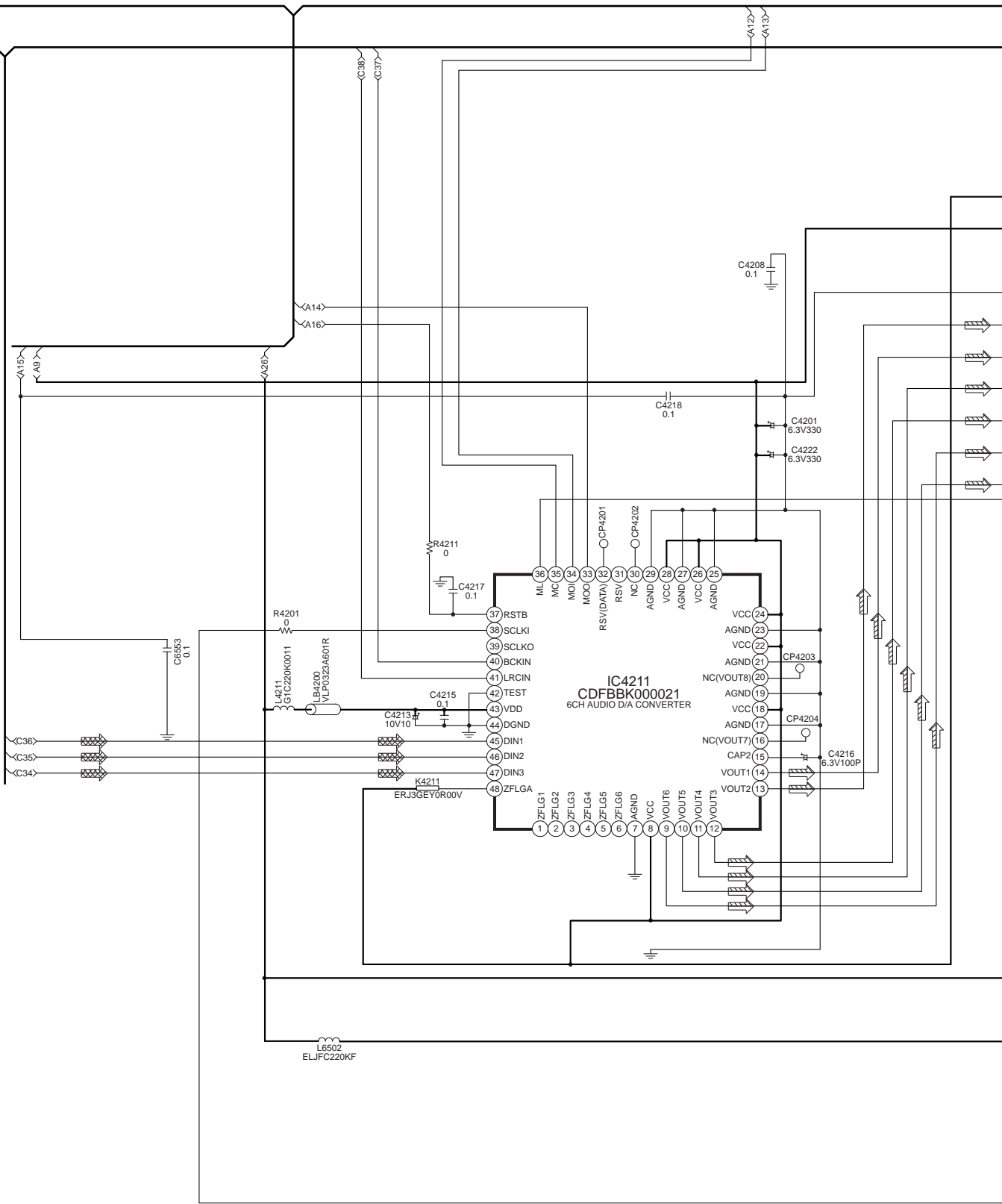
⊠ : DVD (VIDEO) SIGNAL LINE



TO **F** DVDREG CIRCUIT (CP6251) ON SCHEMATIC DIAGRAM-21

⊞ : CD/DVD (AUDIO) SIGNAL LINE

⇒ : MAIN SIGNAL LINE



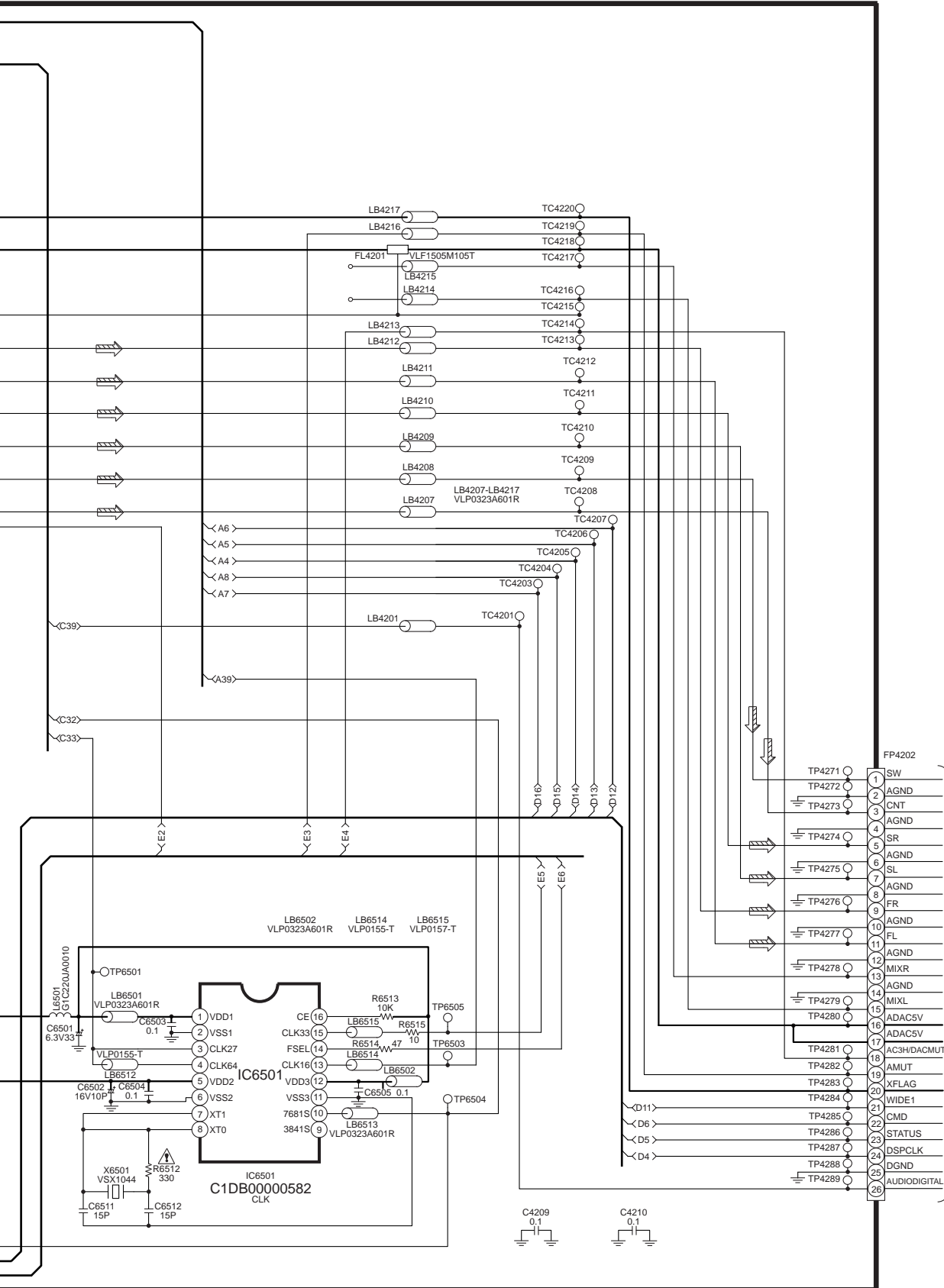
SCHEMATIC DIAGRAM - 15

B

DVD MODULE(2) CIRCUIT

— : +B SIGNAL LINE

⇨ : MAIN SIGNAL LINE



F
TO DVDREG
CIRCUIT
(CN1304) ON
SCHEMATIC
DIAGRAM-20